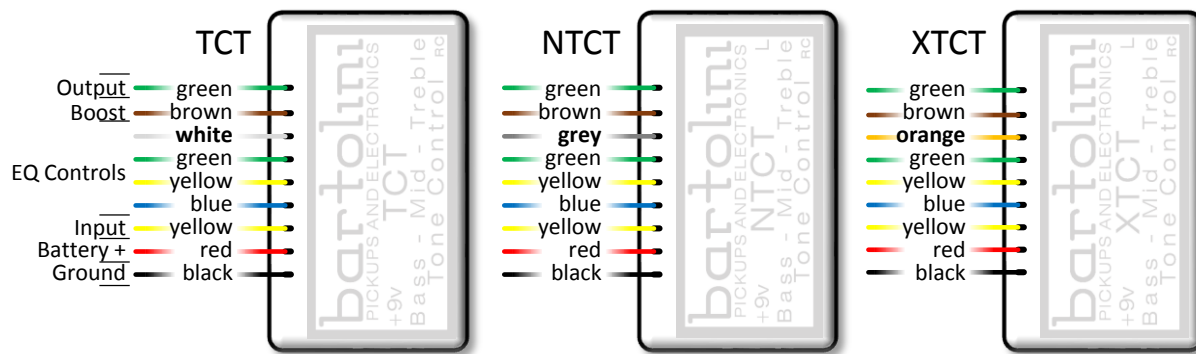


Vintage 3-Band Preamp/Tone control

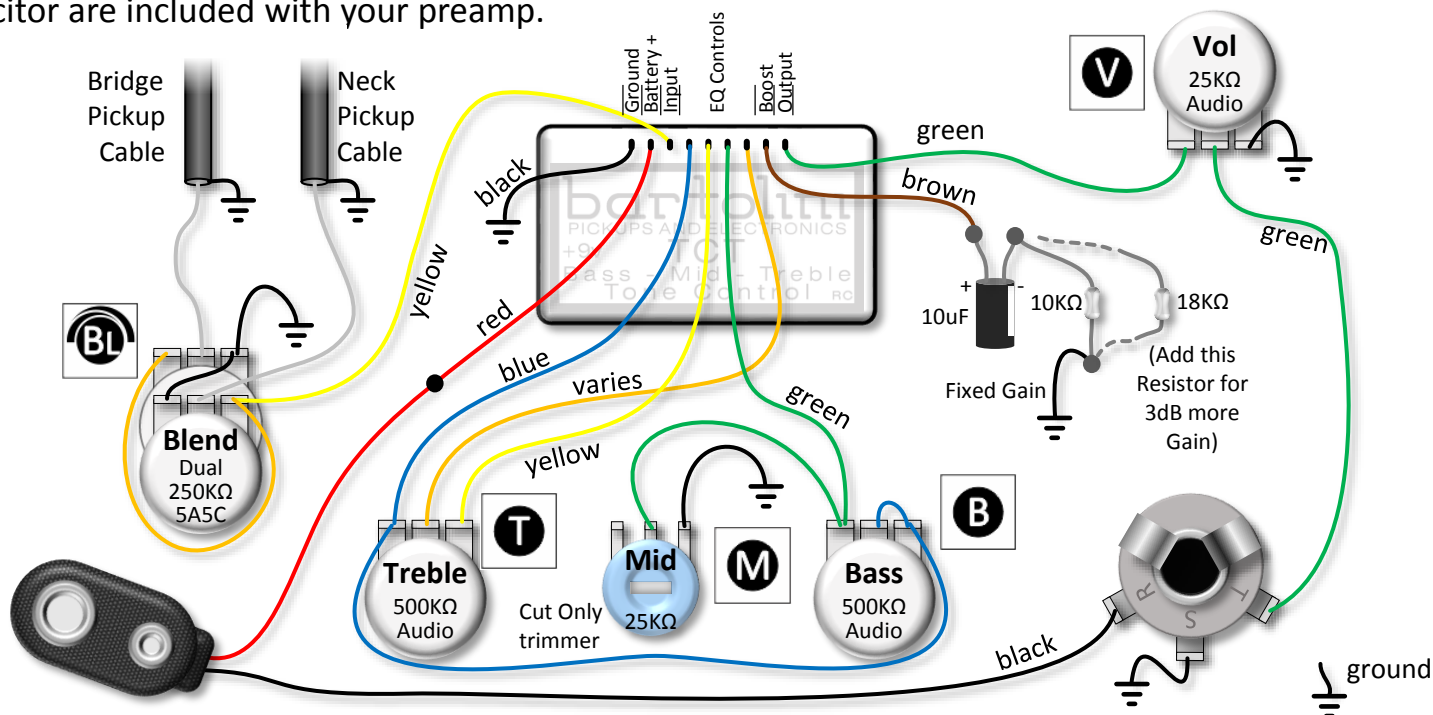
The TCT Family of tone control preamps has Bass, Mid, and Treble controls with very low noise and wide adjustment range. The sound is extremely clear with low distortion. Bass and Treble bands can be boosted or cut. The Mid band can be narrow notch cut only. An MCT mid boost module can be added for full boost and cut of the mid. The TCT family of preamps are powered by a 9 Volt battery which provides 8-12 months of use. Do not use more than 9 Volts – damage may occur.

The TCT Family has 3 models distinguished by their mid cut frequency.

Model	Bass	Mid	Treble	Input Impedance	Output Impedance	Power
TCT	+/-12dB@50Hz	-16dB@ 300Hz	+/-13dB@6KHz	320KΩ	60KΩ	650uA@9V
NTCT	+/-12dB@50Hz	-16dB@ 400Hz	+/-13dB@6KHz	320KΩ	60KΩ	650uA@9V
XTCT	+/-12dB@50Hz	-16dB@ 500Hz	+/-13dB@6KHz	320KΩ	60KΩ	650uA@9V



This diagram shows a basic setup with Mid Cut control in the electronics cavity. This is a popular setup for Jazz bass with the Mid fully or partially cut. The Mid trimmer, battery clip, resistors, and capacitor are included with your preamp.



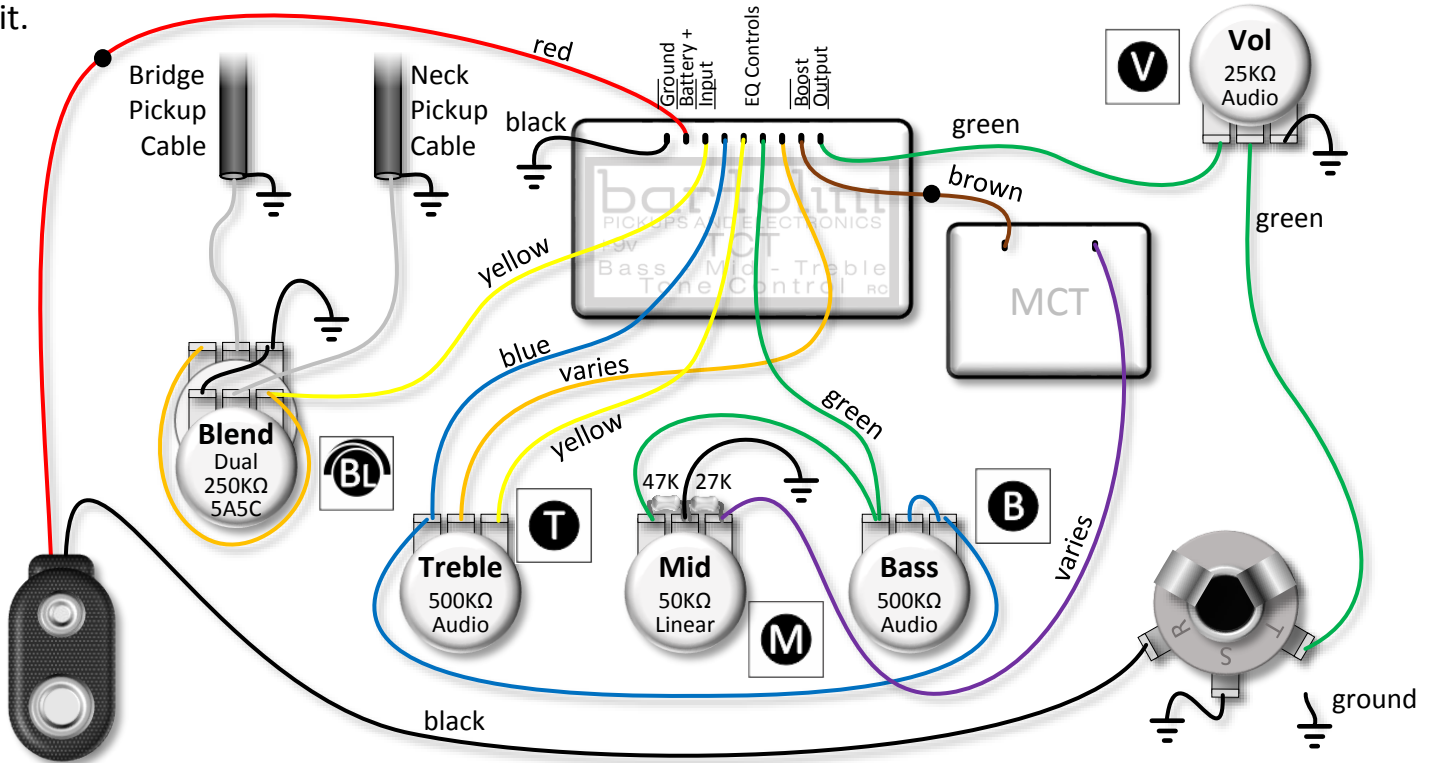
The negative side of the battery should be connected to the jack ring so that power is turned on only when the plug is in. Unplug the instrument when not in use to conserve your battery. Ensure bridge and cavity shields are connected to ground.

Vintage 3-Band Preamp/Tone control

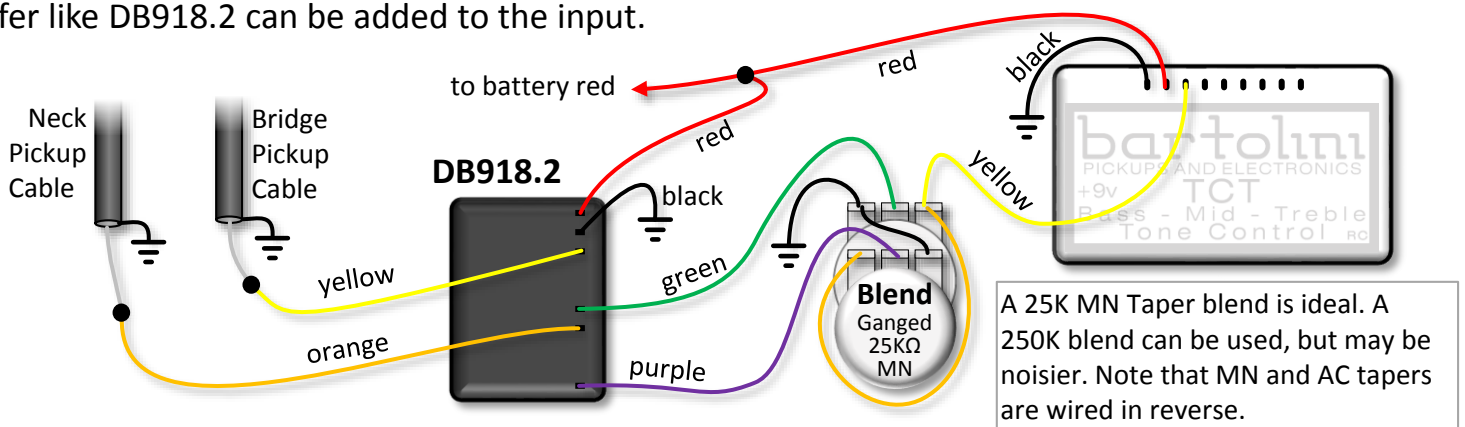
The TCT Family main modules can be mixed and matched with MCT mid boost modules for different mid boost frequencies. The MCT modules provide additional treble boost as well.

Model	Mid Boost	Treble Boost	Wire Colors
MCT-250	+14dB@250Hz	+6dB@2KHz-15KHz	brown + purple
MCT-375	+14dB@375Hz	+6dB@2KHz-15KHz	brown + black
MCT-500	+14dB@500Hz	+6dB@2KHz-15KHz	brown + grey
MCT-3MC	Switchable +14dB@250Hz, 500Hz, or 750Hz	+6dB@2KHz-15KHz	See diagram pg.3

This diagram shows the wiring for an instrument with 2 pickups to have Volume, Pickup Blend, Bass, Mid, and Treble controls with an MCT Mid Boost Module. This same diagram can be used for TCT, NTCT, or XTCT with any single frequency Mid Boost Module: MCT-250, MCT-375, or MCT-500. The 50KΩ linear taper Mid pot has 47KΩ and 27KΩ fixed resistors for correct biasing of the EQ circuit.

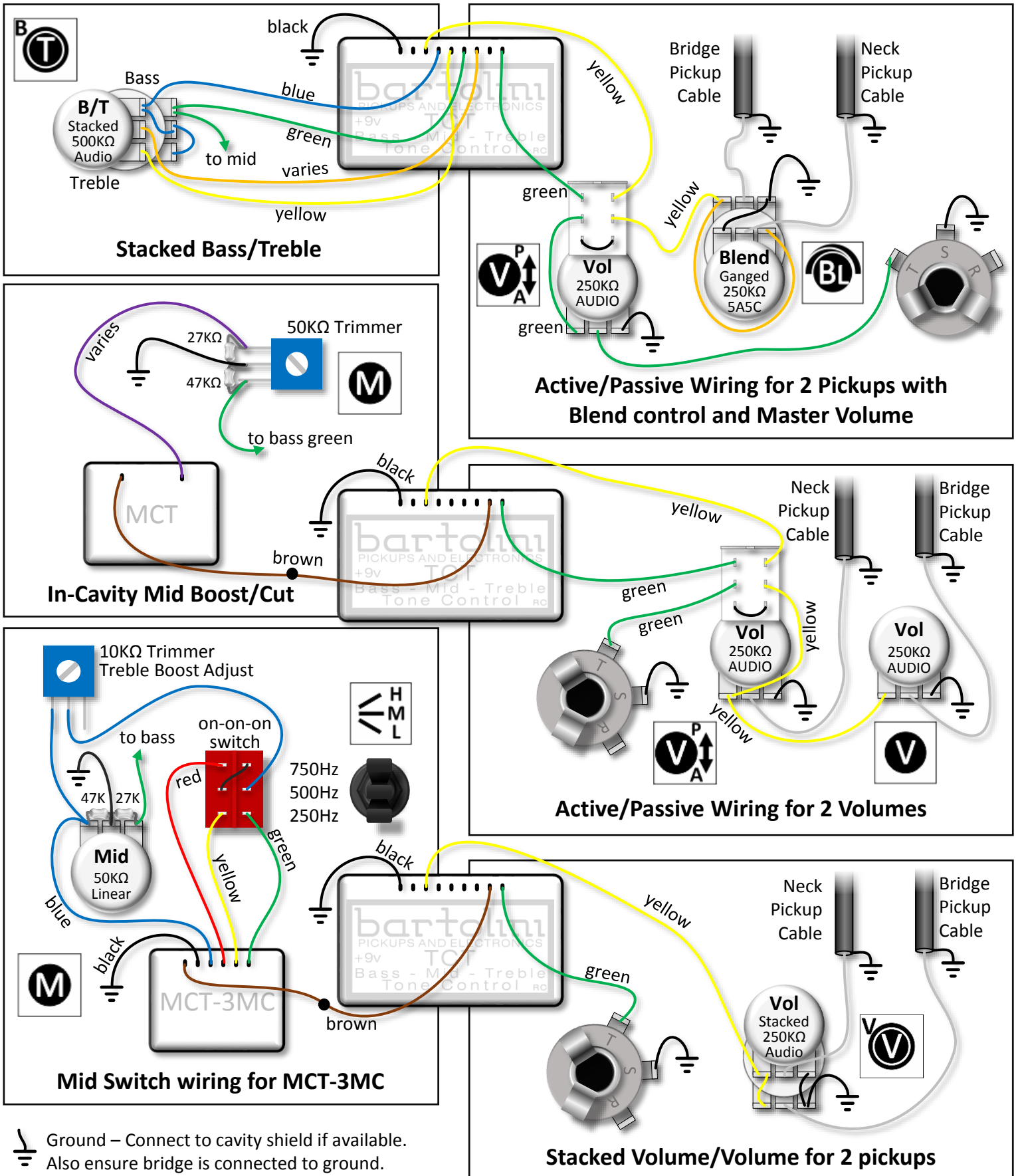


For additional gain from low output pickups or for blend isolation for improved clarity, a dual buffer like DB918.2 can be added to the input.



A 25K MN Taper blend is ideal. A 250K blend can be used, but may be noisier. Note that MN and AC tapers are wired in reverse.

Wiring Options



Ground – Connect to cavity shield if available. Also ensure bridge is connected to ground.